

OneAquaHealth aims to improve the **sustainability and integrity of freshwater ecosystems** in urban environments. By investigating the **interconnection** of ecosystem health and human wellbeing, the project will identify early warning indicators and enhance **environmental monitoring** with AI-assisted tools. As a result, the project will support decision-makers in finding **adequate and timely decisions** as well as **effective measures** to restore aquatic ecosystems health and promote **OneHealth**.


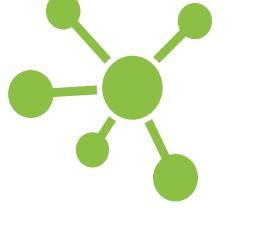
### WORKSHOP | ⌚ 90 min | May 23rd 13:45 to 15:15 at J2

#### One Digital Health for OneAquaHealth: Bridging human health and wellness to interdisciplinary biodiversity preservation


The OneAquaHealth (OAH) project demonstrates the high interconnection between the health of (blue and green) freshwater ecosystems and human health and well-being in urban contexts. In this workshop proposed by the European Federation for Medical Informatics (EFMI) One Digital Health Working Group (ODH WG), and the OAH project consortium, the ODH framework will be deployed to elaborate end-to-end processes that encompass the development of timely AI-based decision support systems for preserving biodiversity. Aiming at active participation of workshop participants, we will advance our understanding of the relevant indicators and design more robust experiments, also engaging young medical informaticians in this multidisciplinary research area.

One Health | One Digital Health | Urban aquatic ecosystems | Citizen Science | Public health informatics

#### GOALS

-  **EXPLORE** the deployment of One Digital Health paradigm within the context of the OneAquaHealth project.
-  **BUILD** community engagement and map strategies for enabling principles to be foundational in public health informatics efforts.

#### IMPACT

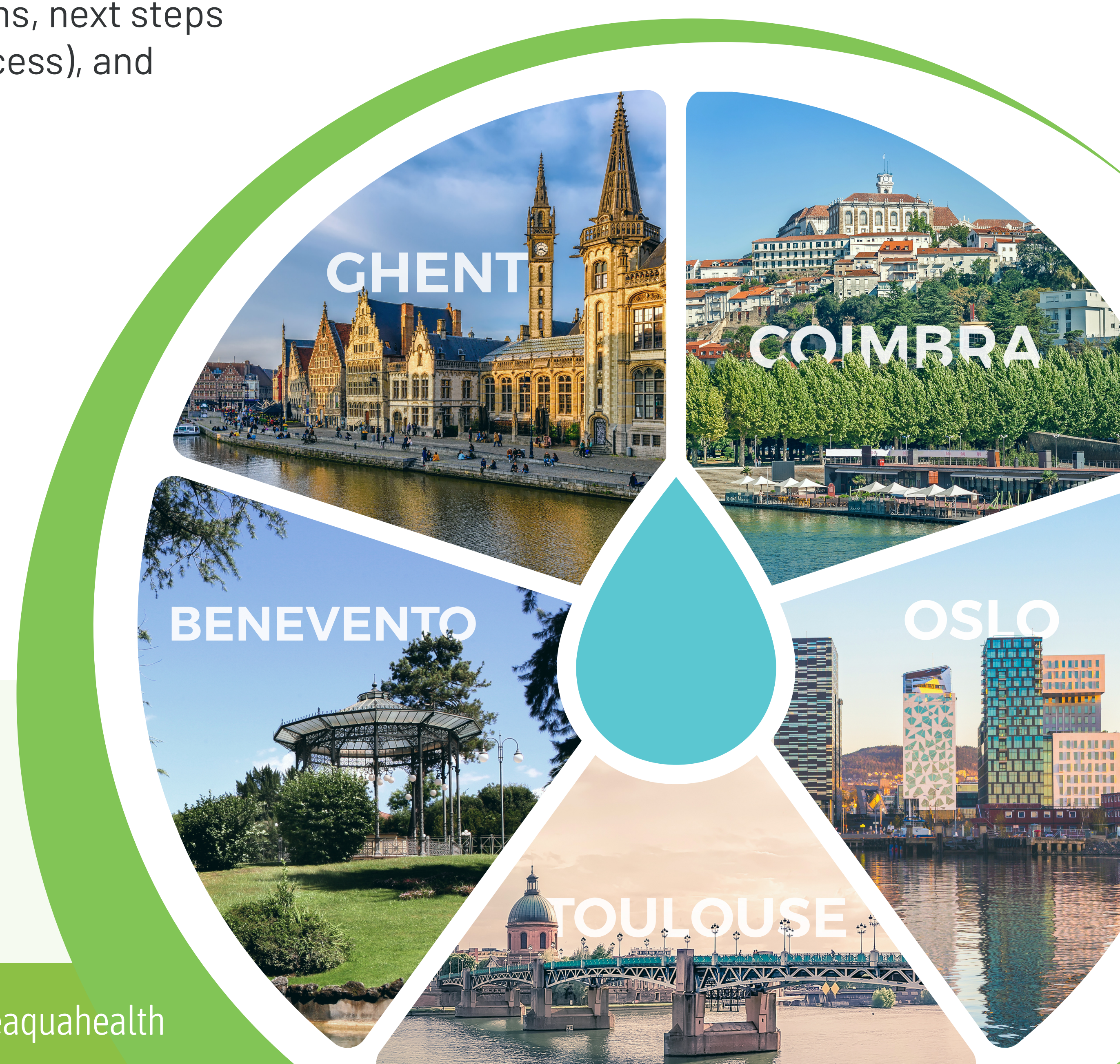
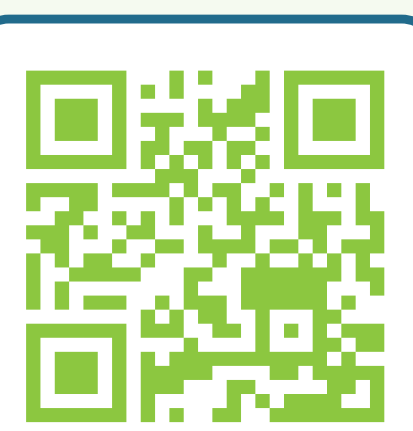
-  **INSPIRE** young members of the community towards key research problems at the intersection of human, animal, and environmental health.

#### APPROACH

-  **GENERATE** ideas and challenges based on the list of proposed human health and ecological indicators along specific themes designing experiments.
-  **IDENTIFY** 2-3 key action items, next steps (e.g., multi-stage Delphi process), and take-home message.
-  **ENGAGE** the EFMI community in the OneAquaHealth project.

**VISIT OUR OPEN INFORMATION HUB NOW!**  
Discover our latest updates and news about the OneAquaHealth project.

Scan Me



 [oneaquahealth.eu](http://oneaquahealth.eu)  [office@oneaquahealth.eu](mailto:office@oneaquahealth.eu)  [@OneAquaHealth](https://twitter.com/OneAquaHealth)  [Oneaquahealth](https://www.facebook.com/Oneaquahealth)